



Hot melt applicator 10L FlexControl

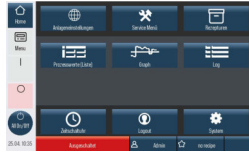
Adhesive applicator with new, innovative "FlexControl" system, with a tank capacity of 10 litres for gentle processing of thermoplastic EVA, PSA and PO hot melts in the form of granules, pillows or blocks



The tank-unit with pressure-regulated system enables precise and even glue application. The integrated dosing meter function as well as the automatic speed control (quantity specification in g/m² or g/lfdm) ensure maximum operating convenience. The complete basic equipment in compact and easy-to-maintain design includes a weekly timer, operating hours and switching cycle counter as well as the recipe menu. The user administration is protected by password.



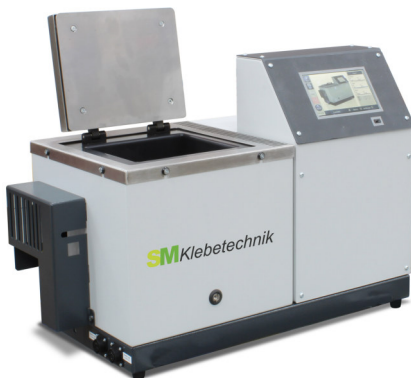
FlexControl start screen -
Touch panel Operating unit



Clear menu level for all
higher-level parameters,
timer, process data, service
and much more



"Dosing meter" menu - automatic speed control according to
quantity specification in g/m² or g/lfdm



Large tank filling opening, protective cover for filter and hose connections, connection sockets easily accessible, customised equipment with level monitoring of the tank content, automatic filling system and much more

SM Klebetechnik Vertriebs GmbH
Otto-Hahn-Str. 19a
D-52525 Heinsberg

Phone: +49 (0) 24 52 / 91 72-0
Fax: +49 (0) 24 52 / 91 72-20
E-Mail: info@sm-klebetechnik.de

www.sm-klebetechnik.de

Delivery and services are effected in accordance with the current terms of business of the SM Klebetechnik Vertriebs GmbH.

Standard equipment

FlexControl - new and innovative microprocessor control unit of SM Klebetechnik

Dosing meter - automatic speed control - quantity specification g/m² g/lfdm.

Pressure sensor with PL "c" instead of bypass - unique for this device category!

Colour display and touch panel control unit - intuitive system operation
Weekly timer, operating hour counter, recipe menu, user + password

Remote control via tablet or smartphone

Software update via USB interface/storage of recipes on a USB stick

Temperature setback can be activated automatically or manually

PID temperature controller with self-tuning for sensor PT100, Ni120, NTC

Replaceable tank heater, non-stick coating in melting tank

Filter block made of high-strength aluminium, large tank filter with high durability

Uniquely comprehensive basic equipment with the smallest external dimensions

Precision gear pump for volumetric delivery

Automatic start-up protection of the pump / maintenance-free three-phase drive

Optional equipment

Individual system configuration possible:

Level control with LED signal light to indicate the fill level

Automatic filling system for granulate

Flow rate measurement

Different pump sizes available

Compatible connection with systems from other manufacturers available

Pneumatic bypass for reproducible control of the adhesive pressure

Process data logging

Technical data

Heating:	Electric
Heating capacity:	appr. 2,0 kW (tank)
Melting capacity:	up to 5 kg/h (depending to media in use)
Voltage:	3/N/PE 400 V AC, 50 Hz
Pump system:	Gear pump
Pump rate:	5 kg/h – 40 kg/h
Pump drive:	3-phase brush-less AC motor
Drive power:	250 W
Speed control:	Frequency converter
Hose connection:	1-2
Dimensions L, B, H:	740 x 350 x 517 mm